

Installing the Low Power and Lead Free/Low Power Versions of Platform Cable USB

The **low power** and **lead free/low power** versions of Platform Cable USB are not automatically recognized by Xilinx ISE versions earlier than 8.2i. If you wish to use either of these cables with an ISE earlier than 8.2i, you must follow the installation procedure detailed in this document.

The procedure is divided into 3 steps:

Step 1: Determine Your Cable Type

Step 2: Check Your Xilinx ISE Version

Step 3: Installation

If this is your first time installing a low power or lead free Platform Cable USB, it is highly recommended that you carefully read through each step and follow the procedure in the correct order.

Step 1: Determine Your Cable Type

The model number printed on the cable's case indicates the type (Figure 1).

- If Model **DLC9LP** → Low Power cable. Go to Step 2.
- If Model **DLC9G** → Low Power & Lead Free cable. Go to Step 2.
- If Model **DLC9** (with no trailing alpha) → Neither Lower Power nor Lead Free. If you are using ISE 6.3i SP3, then go to Step 2. Otherwise, no installation required. Do not continue with this installation.



Figure 1. Example of a Label on a Low Power Cable

Step 2: Check Your Xilinx ISE Version

You can find your Xilinx ISE version through the Project Navigator (or iMPACT) GUI:

1. Launch the Xilinx ISE Project Navigator (or iMPACT)
2. From the pull down menus near the top of the GUI, select **Help**
3. Select **About...**

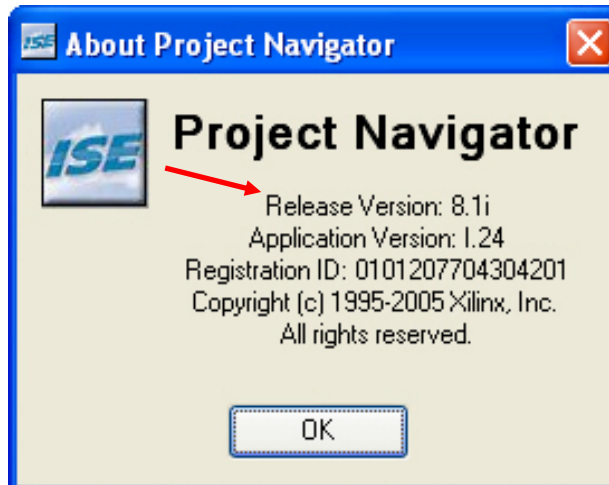


Figure 2. Finding Your ISE Version

Once you have determined the ISE Version, you must decide whether to continue with the installation:

- If **8.2i or later** → No installation required. Do not continue with this installation.
- If any version from **7.1i through 8.1i SP3** → Installation required. Proceed to Step 3
- If **6.3i SP3** → Refer to Answer Record 20330. Do not continue with this installation.
- If **6.3i SP2 or earlier** → Platform Cable USB not supported. You must upgrade your ISE before continuing.

Step 3: Installation

Perform the following operations to install the cable:

1. Extract the **install_cable.bat** and **xusbdrv.inf** files from the **install_cable.zip** to your **c:\xilinx\bin\nt**⁽¹⁾ directory (you can overwrite the **xusbdrv.inf** file that currently resides in this directory).
2. Disconnect the Platform Cable USB from your PC
3. Open a DOS shell (Figure 3)
4. From the DOS shell, navigate to the **c:\xilinx\bin\nt**⁽¹⁾ directory by entering:
cd c:\xilinx\bin\nt [Return]
5. Run installation batch file by entering: **install_cable** [Return]
6. Installation is complete when you see **install: completed successfully**. You can ignore any warning messages that may appear (Figure 4).
7. Exit the DOS shell
8. Reconnect the Platform Cable USB to the desired USB port and follow the 'Found New Hardware' wizard⁽²⁾

Notes:

(1) *c:\xilinx\bin\nt is the default installation path. If you have used an environment variable to establish a different installation location using the %XILINX% alias, perform all operations in %XILINX%\bin\nt.*

(2) *Refer to the Platform Cable USB data sheet (DS300) for details on enumeration and the 'Found New Hardware' wizard sequence.*

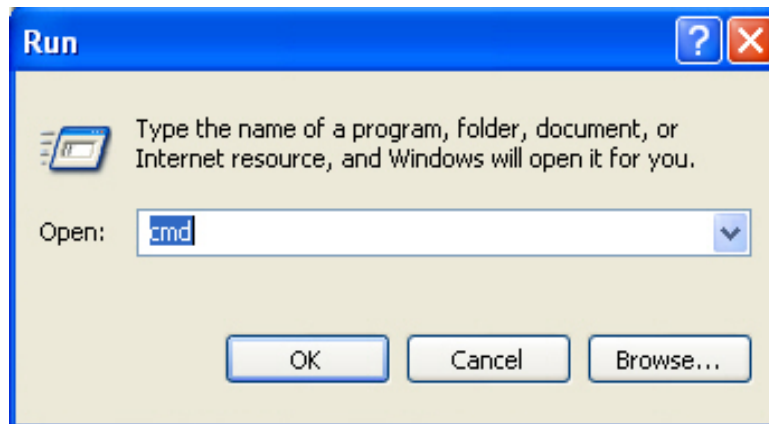


Figure 3. Open a DOS Shell ('cmd') Using the Windows 'Run' Command

```
C:\INF-PATCH-REVC>install_cable

C:\INF-PATCH-REVC>wdreg -inf "C:\INF-PATCH-REVC"\xusbdrv.inf install
Warning: the device (hid:USB\VID_03FD&PID_0008) is not plugged-in.
Warning: the device (hid:USB\VID_03FD&PID_0008) is not plugged-in.
Warning: the device (hid:USB\VID_03FD&PID_0007) is not plugged-in.
Warning: the device (hid:USB\VID_03FD&PID_0008) is not plugged-in.
Warning: the device (hid:USB\VID_03FD&PID_0007) is not plugged-in.
Warning: the device (hid:USB\VID_03FD&PID_0008) is not plugged-in.
Warning: the device (hid:USB\VID_03FD&PID_0007) is not plugged-in.
Warning: the device (hid:USB\VID_03FD&PID_0008) is not plugged-in.
Warning: the device (hid:USB\VID_03FD&PID_0008) is not plugged-in.
Warning: the device (hid:USB\VID_03FD&PID_0007) is not plugged-in.
Warning: the device (hid:USB\VID_03FD&PID_0008) is not plugged-in.
Warning: the device (hid:USB\VID_03FD&PID_000D) is not plugged-in.
Warning: the device (hid:USB\VID_03FD&PID_0008) is not plugged-in.
Warning: the device (hid:USB\VID_03FD&PID_0007) is not plugged-in.
Warning: the device (hid:USB\VID_03FD&PID_0008) is not plugged-in.
Warning: the device (hid:USB\VID_03FD&PID_000D) is not plugged-in.
install: completed successfully
C:\INF-PATCH-REVC>
```

Figure 4. Installation Completes Successfully