

Article Index

---

[Modern Art](#)

[Applying the Filters](#)

[Subtle Lighting](#)

[Final Results](#)

[All Pages](#)

Page 1 of 4

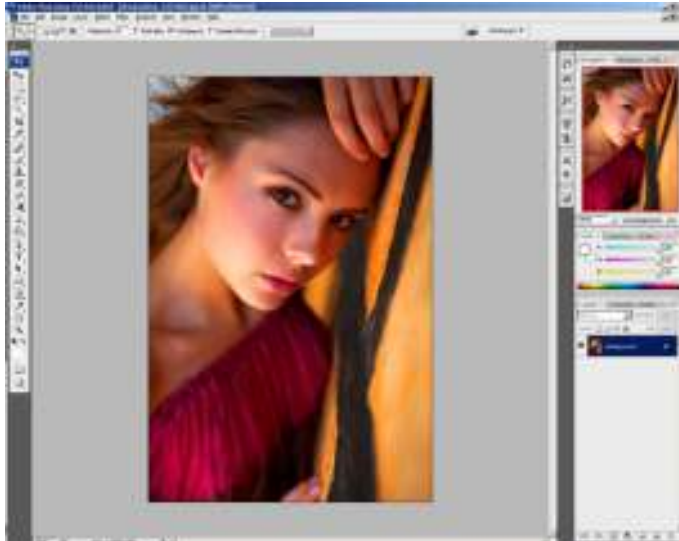
Apply this new modern art effect to your photos. This is a good way to create a unique effect similar to vector and pop art.



## Modern Art Photoshop Tutorial

### Step 1

Load any photo into Photoshop.



### Step 2

Choose Layer > Duplicate to duplicate the layer. We'll keep the original Background layer untouched. It's important to keep a copy of the original image in its own layer so that whenever you need to access that image, you'll have a copy of it.



### Step 3

To create the outlines, choose Filter > Stylize > Find Edges. Your image should have an effect like the image shown below.

